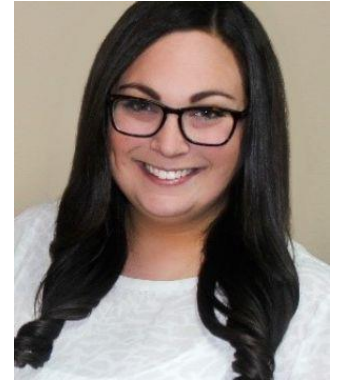


FOR IMMEDIATE RELEASE

Hayward, CA – February 8<sup>th</sup>, 2018

## **Kimberly Taylor Serves As President Of CREW Silicon Valley**

### **Arborwell Executive Elected Leading Commercial Real Estate Organization in 2018**



Arborwell, Inc. the West Coast's leading professional tree management company, is proud to announce that their Director of Marketing & Business Development, Kimberly Taylor, is serving as the President of Commercial Real Estate Women (CREW) Silicon Valley in 2018.

"I cannot express how valuable my time with CREW Silicon Valley and CREW Network has been, both in my professional and personal development," says Taylor. "CREW Silicon Valley is dedicated to influencing the success of the commercial real estate industry through the advancement of women – I am honored and humbled to lead this incredible organization and drive us towards that very important mission."

As the Director of Marketing & Business Development with Arborwell, Taylor spearheads sales strategy, client relationship cultivation, marketing investments and brand development across California and Washington. With nearly a decade of experience with clients in the commercial and multifamily real estate communities, she has discovered a calling to connect with and help others, both professionally and personally. Kimberly is serving as the 2018 President of CREW after holding a Board position with the organization for the past four years. She co-founded CREW SV's inaugural Mentorship Program which launched in February 2018, an effort that reflects her passion to help develop the next generation of real estate professionals.

"The theme of my CREW Presidency is 'engagement' – our Board of Directors is working to cultivate and develop more venues for current, past, and potential members to participate and have valuable experiences with our organization," says Taylor.

"I am very proud Kimberly's commitment to and achievement within CREW – as in her role at Arborwell, I am sure her leadership and ability to collaborate will benefit the organization tremendously," says Andy LaVelle, President of Arborwell. "Always someone looking to the future, Kimberly will undoubtedly provide great direction for CREW SV in 2018."

Kimberly is also an active member of the Housing Industry Foundation (HIF) and has been a mentor with the organization Students Rising Above (SRA). Kimberly is a Bay Area native, and holds a BA in Sociology and Communications from the University of California, Davis, as well as a Certificate in Marketing from the University of California, Berkeley Extension. She is also a Certified Arborist with the International Society of Arboriculture (ISA).

### **Arborwell Professional Tree Management**

Arborwell is an employee-owned professional tree management company committed to providing arboricultural services that enhance the beauty, health, safety and value of trees. They value their customers, employees, and community while contributing to and saving a healthy, sustainable environment through the proper management of trees. Arborwell offers tree pruning, removal, preservation, installation, tree wellness services, and arborist consultations to commercial and apartment property managers, corporate campuses, contractors, golf courses, and municipalities. Arborwell serves all of California and Washington State.

### **Contact Arborwell**

T: 1.888.969.8733  
F: 1.510.881.5208  
[www.arborwell.com](http://www.arborwell.com)